

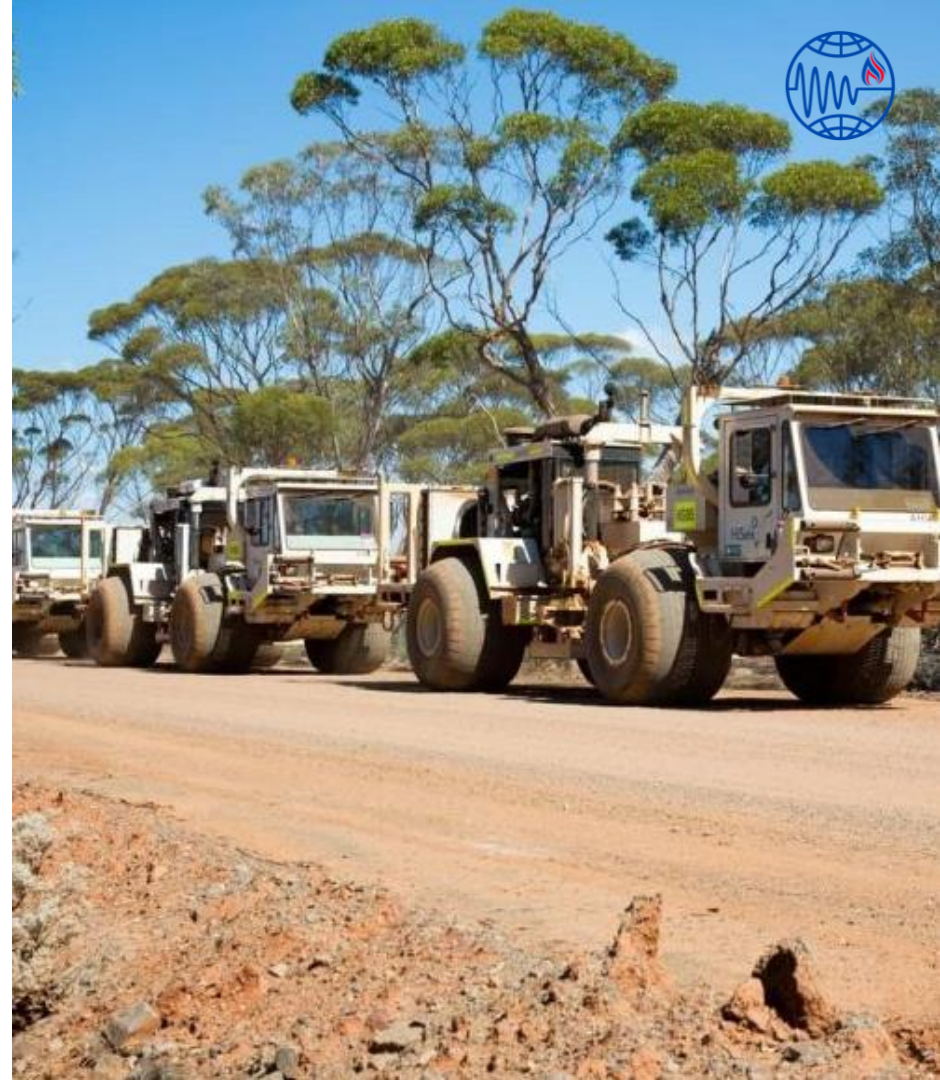


Heerental

HARMONIOUS ENERGY EQUIPMENT L.L.C

About Us

HARMONIOUS ENERGY EQUIPMENT L.L.C is a leading supplier of leasing and selling geophysical equipment, including exploration equipment used in land, mountain and transition zone areas. acquisition systems of wired and wireless nodes for geophysical exploration seismic Projects. Different Models of Geophone, different models of vibrator vehicles, different models of geophysical seismic drilling rigs, Different models of oil drilling RIGS and workover rig LVL and UPHOLE acquisition equipment, work area transportation equipment, Work area line clearing and road repair equipment. All geophysical equipment can be completed in our company one-stop organization .





Perfect Solutions

We Promise To Find You The Right Equipment

When you rent geophysical equipment from us, you get a model product equipped with the latest technological innovations. This allows you to perform the task at hand with greater speed, efficiency and accuracy. When you purchase equipment, you run the risk of having it become obsolete in a short time. We fully service our low-hour rental units, which come from leading manufacturers to ensure the highest quality and dependability.

Heerental sells and leases seismic data collection equipment used specifically for land, transition areas or deep water areas. We offer some of the most competitive rates on the market today, guaranteeing quality, reliability and functionality.



Why Heerental?



INTEGRITY



TEAMWORK



COMMITMENT



INNOVATION

Our Service

A.

We acquire seismic data using the latest equipment for the World's leading International and National Oil Companies. Therefore, we maintain our equipment at the best shape with regular maintenance and repair.

B.

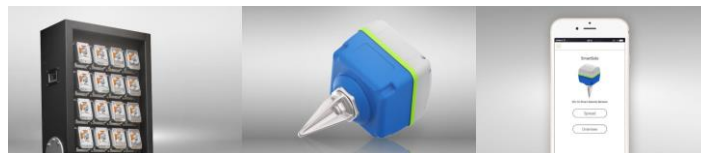
The equipment will be delivered to you in the best shape and on time.

C.

Equipment is regularly inspected and maintained to the manufacturers specification right down to the last hour of operation. It is also meticulously checked before it's shipped to customers.

D.

At Heerental, seismic data acquisition is our core business. When we say we understand your seismic acquisition equipment needs, you can rest assured that the equipment you will receive will be fit for the job.





Geophysical Equipment



1. Seismic Geophysical Equipment
2. Non Seismic Geophysical Equipment

Seismic Geophysical Equipment



1

**Geophones &
Geophones String**

2

**Seismic Acquisition
System**

3

Source Equipment

4

Drilling Rig





GEOPHONES

Geophone is a device that converts ground movement (velocity) into voltage, which may be recorded at a recording station. The deviation of this measured voltage from the base line is called the seismic response and is analyzed for structure of the earth.

1

Standard Geophones

- CDS-20DX-4.5Hz
- CDS-20DX-10Hz
- CDS-20DX-28Hz
- CDS-20DX-40Hz
- CDS-20DX-60Hz

2

High Precision Geophones

- CDHP-1 (Equivalent 30DX-10Hz)
- CDHP-2 (Equivalent GS-32CT)
- CDHP-3 (Equivalent SM-24)
- CDHP-4 (Equivalent SG-10)
- CDHP-7 (Equivalent SG-10)

3

High Sensitivity Geophones

- CDHS-5 (Equivalent SG-5)
- CDHS-6 (Equivalent GS-ONE)

4

Hydrophone

- HS 25
- HDS2



Standard Geophones

CDS-20DX-10Hz



CDS-20DX-4.5Hz



CDS-20DX-28Hz



CDS-20DX-40Hz



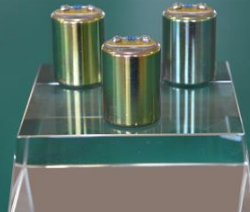
CDS-20DX-60Hz





High Precision Geophones

CDHP-1 (Equivalent 30DX-10Hz)



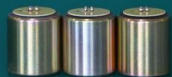
CDHP-2 (Equivalent GS-32CT)



CDHP-3 (Equivalent SM-24)



CDHP-4 (Equivalent SG-10)



CDHP-7 (Equivalent SG-10)





High Sensitivity Geophones

CDHS-6 (Equivalent GS-ONE)




CDHS-5 (Equivalent SG-5)





Hydrophone





SEISMIC ACQUISITION SYSTEM

Seismic data acquisition consists of gathering and recording of continuous seismic signals from seismic stations. acquisition systems of wired and wireless nodes using for geophysical exploration seismic Projects.

1

Wired System

❖ **Sercel400 Acquisition System**

- 408UL
- 408ULS
- 428XL
- 428XL-Lite.

❖ **Sercel500 acquisition system**

- 508XT

2

Wireless System

❖ **SmartSolo**

Wired System



408ULS



408UL



428XL



428XL-Lite



508XT



Sercel500
acquisition system

Sercel400
Acquisition System

Wireless System

SmartSolo® Seismic Sensor

The SmartSolo seismic sensor developed by DTCC meets the large-scale, high-density, and cost-effective needs of the seismic exploration industry. On the basis of the high-sensitivity geophone DT-SOLO, combined with the electronic and software technology of the mobile Internet era, it can complete the essence of seismic exploration—3W (Wave, When, Where), that is, high-fidelity seismic wave signal, accurate data time And location. Peripheral equipment is divided into: data management center (DMC), data collection center (DCC), data download rack (DHR). Its high-speed data download is 240GB/7 minutes, 3000 channels@ 20day @2ms <3.5 hours.

- ✓ Light weight (1.1 kg including battery and spike)
- ✓ Small footprint (95mm X 103mm)
- ✓ DT-SOLO (High-sensitivity sensor technology, 10Hz & 5Hz optional)
- ✓ Mobile app (scanning & technical support)
- ✓ Lowest per channel cost in the seismic industry
- ✓ No exposed connector in the field
- ✓ Optional external battery and sensor
- ✓ Automatic sensor testing and GPS logging
- ✓ 50 days operating life @ 25°C 1ms 12h ON/12h Off
- ✓ Built-in 8 GB non-volatile flash memory could be expanded to 32 GB
- ✓ Stake-less operation for max flexibility
- ✓ Auto scan mode for fast deployment



SISMIC VIBRATOR EQUIPMENTS

Seismic vibrators are used to perform about half of all seismic surveys on land.. A **seismic vibrator** is a truck-mounted or buggy-mounted device that is capable of injecting low-frequency vibrations into the earth. It is one of a number of seismic sources used in reflection seismology.

1 **Nomad 65 Neo**

2 **AHV IV362**



Nomad 65 Neo

Nomad 65 Neo is the new all-terrain broadband vibrator. Evolution of the popular Nomad 65 with enhanced mechanical and hydraulic components and shaker redesign, it is capable of delivering stronger low frequency content with full drive achieved from 5.4Hz.

This enhanced performance is made possible using the latest innovations in shaker and hydraulic circuitry design.

Another newly developed feature is the IPM (Intelligent Power Management) system.

BETTER RESERVOIR CHARACTERIZATION

- Stronger low frequency : 5 Hz @ Full drive High-frequency signal fidelity

MOST PRODUCTIVE VIBRATOR

- Highest peak force : 90,000 lbf Sweep length reduction

OPTIMIZED FOR HSE

- Up to 15% fuel savings with IPM Improved compact design

IMPROVED ERGONOMICS

- Lower noise level
- User-friendly interface





AHV IV362

BETTER RESERVOIR CHARACTERIZATION

- Frequency limit of 1 Hz to 250 Hz

MOST PRODUCTIVE VIBRATOR

- Up to 61,800 lbs of peak force

STRUCTURE AND COMPOSITION

- Frame assembly: front frame, rear frame, anti-roll frame, hinge joint, middle frame, maintenance platform

POWER SYSTEM

- Etroit S60 engine uses electronic control fuel injection technology, and its control system Detroit calls DDEC system.



GEOPHYSICAL DRILLING RIG

It is mainly applicable to the drilling operation in the deep and shallow water , loose gravel, mud flat, marsh, grasslands, mountain front, Gobi and hills for seismic prospecting, mine survey, geologic framework investigation etc. such drilling projects.

1

Man Portable Drilling Rig

- HD-15 Flush Drilling Rig
- HD-15A/B Top-Drive Flush Drilling Rig
- HD-20B
- HD-15D Air Motor Top-Drive Flush Drilling Rig
- HD-30
- HD-40A
- HD-40B
- HD-40C
- HD-40E
- HD-40G
- HD-80

2

Crawler Drilling Rig

- HD-C20 MECHANICAL DRIVE
- HD-C30 CRAWLER DRILLING RIG
- HD-C30A Crawler Drilling Rig
- HD-C100A Mechanical Drive

3

Tractor Drilling Rig

- HD-T100 Tractor Drilling Rig

4

Truck Mounted Drilling

- HD-T200
- HD-T300 Truck Mounted Integrated Multi-Functional

Man Portable Drilling Rig



HD-15



HD-15A/B



HD 40A



HD-15D



HD-40G



HD-20B



HD-40B



HD-40E



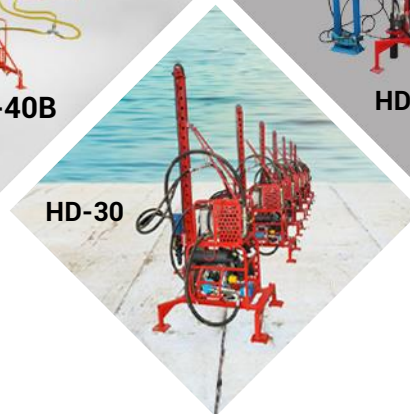
HD-80



HD-40C



HD-30



Crawler Drilling Rig



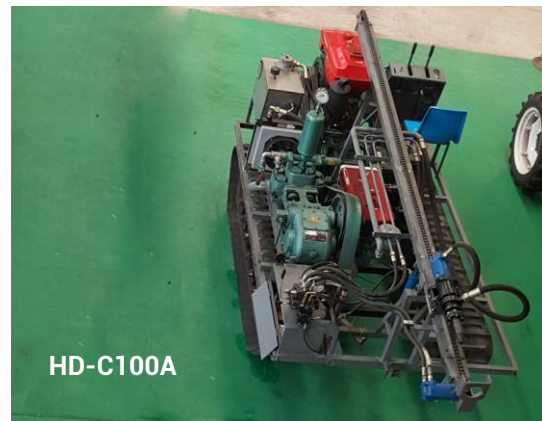
HD-C20



HD-C30



HD-C30A



HD-C100A

Tractor Drilling Rig



Truck Mounted Drilling Rig





Oil Drilling Exploration Equipment

- 1. Module Drilling Rig**
- 2. Truck Drilling Rig**
- 3. Trailer-Mounted Drilling Rig**
- 4. Workover Rig**
- 5. Special Vehicle for Drilling Rig**
- 6. Grouped Equipment for drilling**
- 7. Drilling Pipe, Collar, Tools and Materials**



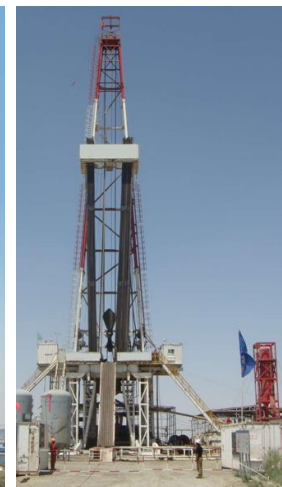
1

MODULE DRILLING RIG

- ZJ10/600
- ZJ15/900
- ZJ20/1350
- ZJ30/1800
- ZJ40/2250
- ZJ50/3150
- ZJ70/4500
- ZJ90/6750

MODULE DRILLING RIG

The Drilling rig adopts the following three driving forms, electric drive (SCR/VFD), mechanical drive and combination drive; adopts block or swing up substructure; adopts K type mast, and TDS can be optional; meanwhile it can be equipped with Drilling pump, Drilling manifold system, Mud circulating system, Well-site electricity system, BOP system, Drilling tools and other auxiliary equipment.



TRUCK DRILLING RIG

Truck drilling rig is an integrated system that drills
Oil Wells in the earth's subsurface.



Truck-Mounted Drilling Rig

- ZJ10/600Z
- ZJ15/900Z
- ZJ20/1200Z
- ZJ30/1500Z
- ZJ40/1800Z



Coalbed Methane Drilling Rig

- ZJ6/300
- ZJ10/490
- ZJ15/600
- ZJ20/900

Truck-Mounted Drilling Rig



Coalbed Methane Drilling Rig



TRAILER- MOUNTED DRILLING RIG

Our company has developed 2000m, 3000m and 4000m diesel driven trailer-mounted rig. Electric rig mainly consists of Trailer, Power system, Trailer-mounted substructure, Trailer-mounted V-Door, Control system, Auxiliary system and so on.

1

Diesel Driven Trailer-Mounted Drilling Rig

- ZJ20/1580CT
- ZJ30/1700CT
- ZJ40/2250CT

2

Electric Driven Trailer-Mounted Drilling Rig

- ZJ30/1700BT
- ZJ40/2250DBT

Diesel Driven Trailer-Mounted Drilling Rig



Electric Driven Trailer-Mounted Drilling Rig



WORKOVER RIG

Workover is a complex maintenance task that involves pulling completion hardware out of a well in order to extend the life of the well. A workover rig is a specially designed rig that makes it easier to take out or insert tubing into a well.

- 1 Heavy-Duty Workover Rig
- 2 Light Workover Rig
- 3 Oil-Electric Dual Power Workover Rig
- 4 Switched Magnetism Reluctance Double Power Workover Rig
- 5 Super Capacitor Energy Storing Dual-Power Workover Rig
- 6 Electric Workover Rig
- 7 Wheel-Mounted Workover Rig
- 8 Workover Rig Without Guy line
- 9 Snubbing Workover Rig
- 10 Flush-By Rig



Heavy-Duty Workover Rig

- XJ900
- XJ1350
- XJ1800
- XJ1100
- XJ1600
- XJ2250





Light Workover Rig

➤ XJ350

➤ XJ600

➤ XJ700





Oil-Electric Dual Power Workover Rig



Switched Magnetism Reluctance Double Power Workover Rig



Super Capacitor Energy Storing Dual-Power Workover Rig





Electric Workover Rig





Wheel-Mounted Workover Rig





Workover Rig Without Guy line





Snubbing Workover Rig





Flush-By Rig



SPECIAL VEHICLE FOR DRILLING RIG

In addition to all this, our special vehicles are introduced here, Top Drive Truck, Gin pole Truck, Semi-trailer with winch and Swept-Body Tripper



Top Drive Truck



Gin pole Truck



Semi-trailer with winch



Swept-Body Tripper



Top Drive Truck





Gin pole Truck





Semi-trailer with winch





Swept-Body Tripper



GROUPED EQUIPMENT FOR DRILLING

In addition to all this, our special Equipment's are introduced here, Drilling Fluid Circulating System, Fracture Flowback Fluid Processing Device and Generator Set



Drilling Fluid Circulating System



Fracture Flowback Fluid Processing Device



Generator Set



Drilling Fluid Circulating System





Drilling Fluid Circulating System





Generator Set



DRILLING PIPE, COLLAR, TOOLS AND MATERIALS

Drill collars are made from AISI 4137H modified alloy steel Cold Rolled & Phosphate Heavy Duty Plastic Thread Protectors are manufactured in accordance with API 7-1 with relief groove on pin and bore back on box make & break connections.





Camp Equipment

1. Wheeled Camper Van



2. Container Room

3. Folding Room

4. Other Equipment

CONTAINER ROOM

This is designed for outdoor mobile portable flat pack container. Assembled light steel integrated house is a combination of structural system. its frame is welded assembly of rectangular square tube.



Assembled light steel integrated house

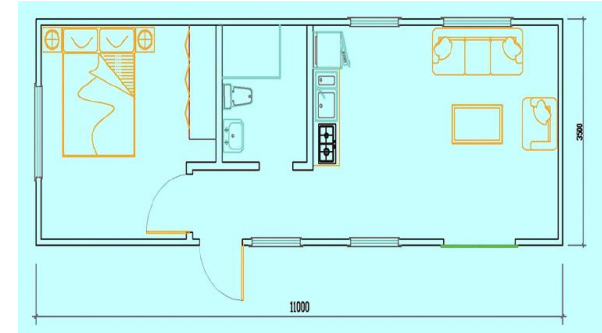


Camp Toilet



Assembled light steel integrated house

Assembled light steel integrated house is a combination of structural system, ground system, floor system, wall system and roofing system based on the design concept of the integrated building. it is mainly used for prefab house, light steel villa, prefab villa, Stunning Labor Camp Accommodation Container is available, a shipping container camp available for rent, lease or sale as assembly containers based on customer specifications, prefab cabins and portable labor camp suppliers.





Camp Toilet

This toilet is designed for outdoor mobile portable flat pack container, which can be used as a shipping container toilet or shipping container shower bathroom, its frame is welded assembly of rectangular square tube, this toilet is commonly used for camp. Heerental is renting or leasing this toilet container and if you want to buy it we are ready for sale.



FOLDING ROOM

This folding container room is a residential container that can be easily folded when needed and it can be transport to another location very quickly.

- 1 **Standard folding box**
- 2 **Wooden folding box**
- 3 **Camouflage folding box**
- 4 **Double wing folding box**
- 5 **Brick pattern folding box**



Standard folding box

This is a standard folding box that can be used on a quickly basis (according to the standard of living) This Standers folding container room is a residential container that can be easily folded when needed and it can be transport to another location very quickly, It is made of steel, high and low beds, building surroundings, security doors and plastic steel windows. Foldable Home Features: Repeatable, Class Floor Protection, Seismic Resistance, Windproof, Rainproof, Recycled, In line with emergency living standards.





Wooden folding box



Wood folding container box made of high quality wood and bamboo materials to ensure collateral is an eco-friendly product. Its frame is made of steel. The wooden container house is the most suitable container room for use in countries with high humidity and can be folded when needed and transported to another location very quickly. Heerental folding is the wholesale supplier of the container, we will rent or lease the wooden container box room you need.



Camouflage folding box

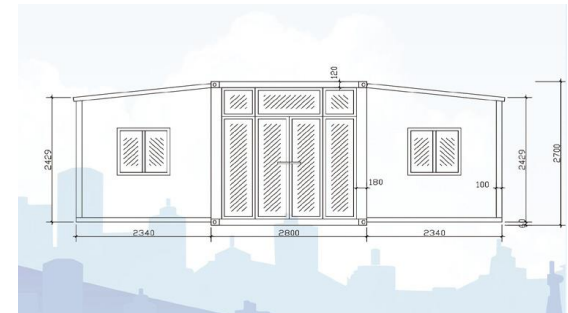
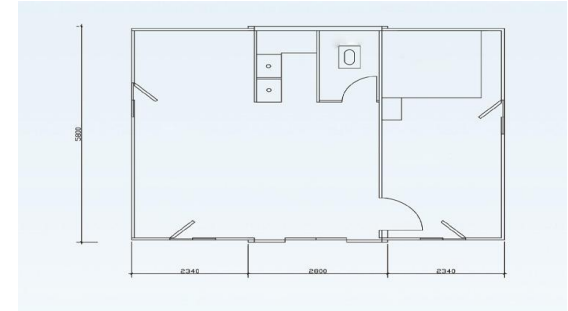


Camouflage folding box container houses are commonly used as labor quarters on construction sites, while others are used as rental housing, which is durable and easy to set up. We rent or lease container rooms in Dubai and sell to those who need them. Folding Container House is made of Wall panel: camouflage and Frame: welded assembly of rectangular square tube.



Double wing folding box

The double wing folding box is a pre-fabricated building container house. The container is made entirely of lightweight metal. Multiple rooms are available in a double-winged folding container. We offer shipping containers to meet all needs. New and used options are available. double wing folding container house available for rent and lease or sell





Brick pattern folding box

The brick pattern folding box is a container house. Brick Pattern Folding Container Using a folding container as a pre-fabricated building for a temporary site office / residence is a great advantage for convenience and space savings. It is very easy to fold as needed and move to the next location. We have the brick pattern folding box container for rent, lease or sell.





OTHER EQUIPMENT

our other special Equipment's are introduced here, Shroud, it is Around the building wall, substations, transformer yards and other utility properties provides safety and security with shroud Equipment, We are suppliers of Portable Container Labor, Luxury Camp, Steel Prefab Labor Container, Temporary Labor Camp and Container Prefab Labor Camp Homes.

1

Shroud



2

Camp Types



Contact Us

HARMONIOUS ENERGY EQUIPMENT RENTAL L.L.C,
Office 307, Deira Tower, Deira,
Dubai, United Arab Emirates (UAE)

Phone:

+971 56 1059999

Email:

info@heerental.com

Website

www.heerental.com


The Office Hours

Sun - Thu 9am to 6pm

Fri – 8am to 12pm

One-Stop Source For All Energy Equipment Rental Needs



A line of military vehicles, possibly Humvees, is parked in a desert environment. The vehicles are arranged in a diagonal line, receding into the distance. The background shows sand dunes under a dark, overcast sky. The entire image is dimmed, with a white rectangular frame centered over the text.

THE END

P R E S E N T A T I O N